

1. Application

A/C Type	Cooling & Heating System
Refrigerant Type	R32/R410A
Maximal Refrigerant Charged	1.8 lbs Max
Power Source	Single Phase 1φ-208-230V-60Hz
Safety Approval	UL

2. Specification

Compressor Type	Hermetic Motor Compressor
Displacement	4.4 in/rev.
Oil Charged	POE VG68 • 9.1 oz
Weight (Oil Included)	24.7 lbs
I. D. of Discharge Pipe	0.32 ±0.0039 in
I. D. of Suction Pipe	0.39 ±0.0039 in

3. Motor Specification

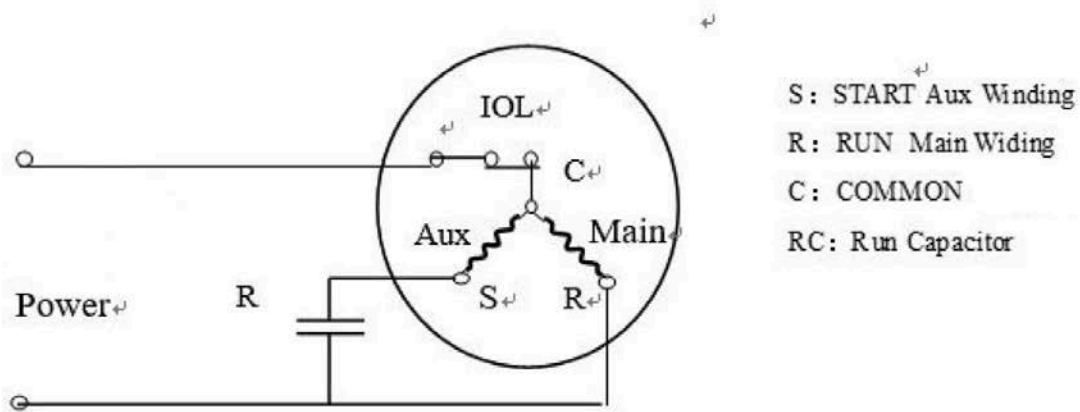
Motor Type	Single Phase Induction Motor • PSC
Pole Numbers	2 Poles
Insulation Grade	E Grade
Coil Resistance (at 20°C)	Main:2.89±5%Ω Aux:2.14±5%Ω
Locked Rotor Amps	(at 1φ-60HZ-240V) 28.5±10% A
Running Capacitor	40μF-370V

4. Rated Performance Parameters

Rated Capacity	3380	±5% W
Rated Input Power	1175	±5% W
Rated Input Current	5.74	±5% A
COP (*Remarks) %	287.0	±5%
NOISE (Sound Power Level)	dB(A) 73	MAX
VIBRATION	m/s ² 15	MAX

Rating Condition

Power Source	1φ-60HZ-208-230V	1φ-60HZ-208V
Cond. Temp.	129.9°F	129.9°F
Evap. Temp.	45°F	45°F
Return Gas Temp.	64.9°F	64.9°F
Liquid Temp.	115°F	115°F
Ambient Temp.	95°F	95°F

5. Wire Connection Figure

6. Other Application Notice

1. When designing the connection tube, the installer should consider the vibration stress at the compressors start and stop to ensure it doesn't get damaged.
2. Do not put a compressor on its side or turn it over. It must always remain standing upright.
3. Please install the compressor right after removing the plugs.
4. When the amount of refrigerant charged in the air conditioner is over the max amount allowable, compressor specification should be discussed. (Install additional accumulator, oil heater, etc.)
5. Refrigerant must always be filled from the high side of the refrigeration system.
6. Avoiding compressor running in reverse by connecting electrical wires correctly.
7. Do not allow electric cables or the like to touch compressor directly.
8. To avoid water droplets and dust into the compressor, moisture-proof or dust-proof measures must be taken.
9. For split type air conditioners, the maximum piping length should be 49.21 feet, and elevation difference should be within 16.4 feet.
10. Wear safety goggles when servicing the unit.

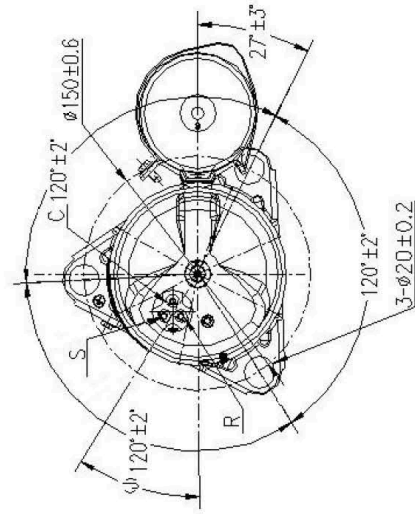
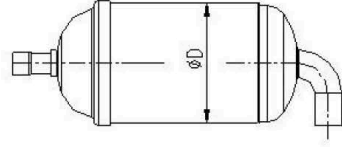
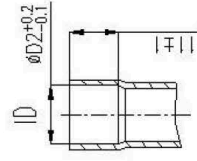
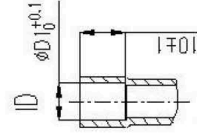
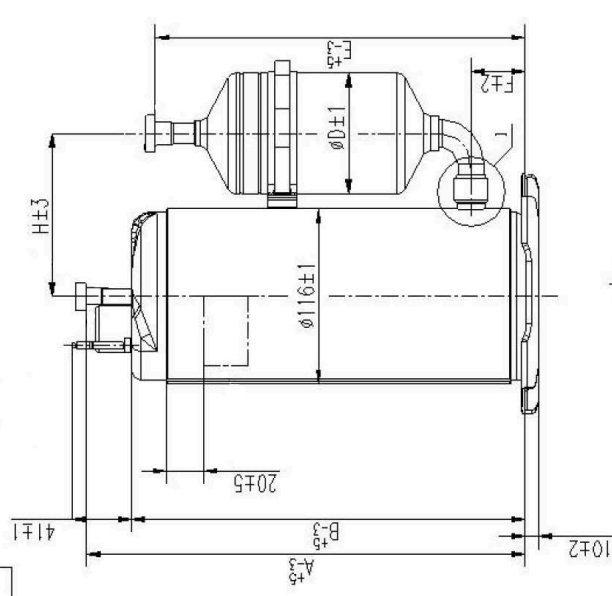
When the KSM113N1UDZ model is used for R410A refrigerant, the performance specifications for 208V / 230V are as follows:

Rated Capacity	3380 / 3400	±5% W
Rated Input Power	1090 / 1105	±5% W
Rated Input Current	5.45 / 5/05	±5% A
COP %	310 / 308	±5%
NOISE (Sound Power Level)	71 dB(A) MAX	
VIBRATION	12 m/s ² MAX	

Note: 1. Capacitor 40μF;

2. The performance specification values in the table above are not subject to mass production control for compressors and are only for system selection reference

RoHS



KSM113N1UDZA	280	249	54.5	250	34	93.5	8.1	9.8	5°
	A	B	D	E	F	H	D1	D2	J

Gr	10
----	----