

1. Application

A/C Type	Cooling & Heating System
Refrigerant Type	R22
Maximal Refrigerant Charged	3.97 lbs Max
Power Source	1 ϕ -60Hz-208/230V
Safety Approval	UL, CUL: SA12105

2. Specification

Compressor Type	Hermetic Motor Compressor
Displacement	10.28in ³ /rev.
Oil Charged	20.96 oz
Weight (Oil Included)	33.07 lbs

3. Motor Specification

Motor Type	Single Phase Induction Motor • PSC
Pole Numbers	2 Poles
Insulation Grade	E Grade
Coil Resistance (at 68°F)	Main: 1.52 \pm 5% Ω Aux.: 2.99 \pm 5% Ω
Locked Rotor Amps	(at 1 ϕ -60Hz-240V) 51.0 \pm 10% A
Running Capacitor	Capacity: 40 μ F Withstanding Voltage: \geq 370 VAC

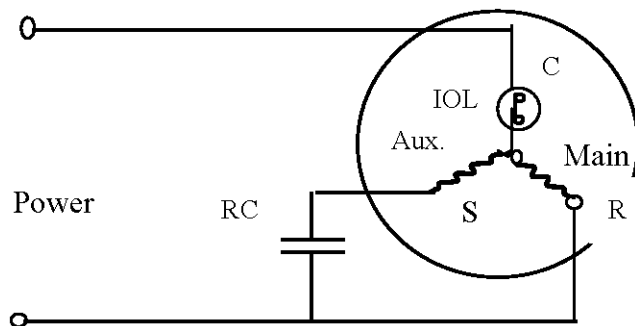
4. Rated Performance Parameters

Rated Capacity		19,193 BTU
Rated Input Power		1825 / 1945 W
Rated Input Current		9.0 / 9.4 A
% COP		308 / 292 W/W %
NOISE	dB(A)	73 MAX
VIBRATION	ft/s ²	10.83 MAX

Rating Condition

Power Source	1φ-60Hz-208/230V	1φ-60Hz-208V
Cond. Temp.	54.4°C / 130°F	54.4°C / 130°F
Evap. Temp.	7.2°C / 45°F	7.2°C / 45°F
Return Gas Temp.	35°C / 95°F	18°C / 64.4°F
Liquid Temp.	46.1°C / 115°F	
Ambient Temp.	35°C / 95°F	20°C / 68°F
Discharge Tube Temp.	85°C / 185°F (Forced Air)	80°C / 176°F

5. Wire Connection Figure



- S: START (AUX WINDING)
- R: RUN (MAIN WINDING)
- C: COMMON
- RC: RUNNING CAPACITOR
- IOL: Internal Overload Protector

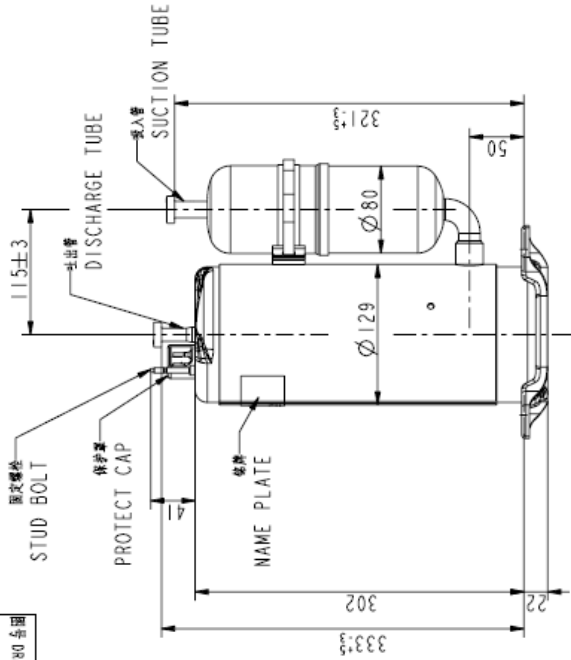
6. Other Application Notice

1. When designing the connection tube, the installer should consider the vibration stress at the compressor's start and stop to ensure it doesn't get damaged.
2. Do not put a compressor on its side or turn it over. It must always remain standing upright.
3. Please install the compressor right after removing the plugs.
4. When the amount of refrigerant charged in the air conditioner is over the max amount allowable, compressor specification should be discussed. (Install additional accumulator, oil heater, etc.)
5. Refrigerant must always be filled from the high side of the refrigeration system.
6. Avoiding compressor running in reverse by connecting electrical wires correctly.
7. Do not allow electric cables or the like to touch compressor directly.
8. To avoid water droplets and dust into the compressor, moisture-proof or dust-proof measures must be taken.
9. For split type air conditioners, the maximum piping length should be 49.21 feet, and elevation difference should be within 16.4 feet.
10. Wear safety goggles when servicing the unit.

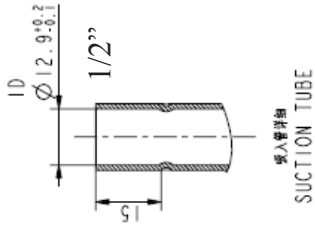
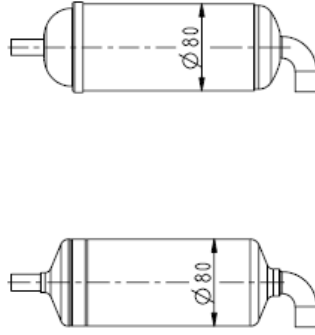
GMCC Rotary Compressor

Part No: PH260M2AS-3KTU1

19898851K1
CON 5M1WY80 台图

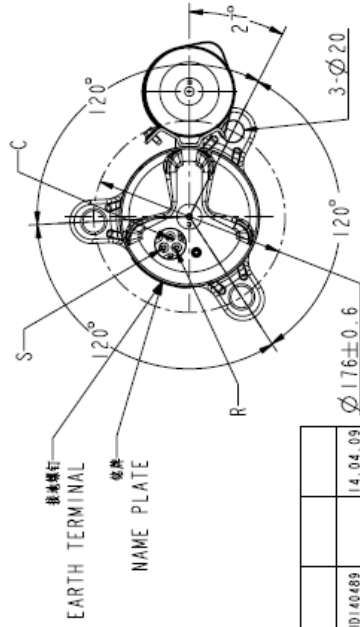


ACCUM 储压室外形详图
安装尺寸相同，储压器外形以实物为准



PH260M2AS-3KTU1	14.04.09
PH260M2AS-3KTS2	13.05.24
PH280M2AS-3KTS1	11.04.21
PH280M2CS-3KTS1	11.01.07
机 种 名	年 月 日

- ③
- ②
- ①



①	71J0140689	14.04.09
②	71J0130763	13.05.24
③	71J0105502	11.04.21
标记来源 MARK	更改文件号 REV. NO.	签字日期 MODIFIED BY DATE



DESIGNED BY 设计	陈远光	TECHNOLOGY 工艺	陈远光	ABB. 简称	DRAW EXTER
DRAWN BY 制图		STANDARD 标准		MATERIAL 材料	IK158868Gr
CHECKED BY 校对		APPROVED BY 审核		图样标记 STAGE OF DRAWING 重量 WEIGHT 比例 SCALE	1:4
AGREED BY 审核		DATE 日期		共 1 页 TOTAL PAGE 第 1 页 PAGE NO.	10
图号 DRAWING NO.					10
名称 TITLE					外形图
DRAW EXTER					
广东美芝制冷设备有限公司 GUANGDONG MEIZHI COMPRESSOR LTD					