

1. Application

| | |
|-----------------------------|--|
| Air Conditioner Type | Natural Cooling |
| Refrigerant Type | R22 |
| Maximal Refrigerant Charged | 4.85 kg / 10.69 lbs, not to exceed 5.0 kg / 11.02 lbs |
| Power Source | 3 Phase 60Hz-208/230V |
| Safety Approval | UL |

2. Specification

| | |
|-----------------------|----------------------------|
| Compressor Type | Hermetic Scroll Compressor |
| Displacement | 5.08in ³ /rev. |
| Oil Charged | 57.5 fl oz |
| Weight (Oil Included) | 83.8 lbs |

3. Motor Specification

| | |
|----------------------------------|--|
| Motor Type | 3-PH Induction Motor |
| Pole Numbers | 2 Poles |
| Insulation Grade | E Grade |
| Coil Resistance (at 25°C / 77°F) | Ω U-V 0.572, Ω U-W 0.572, Ω V-W 0.542 |
| Locked Rotor Amps | 134 A |
| Running Capacitor | N/A |

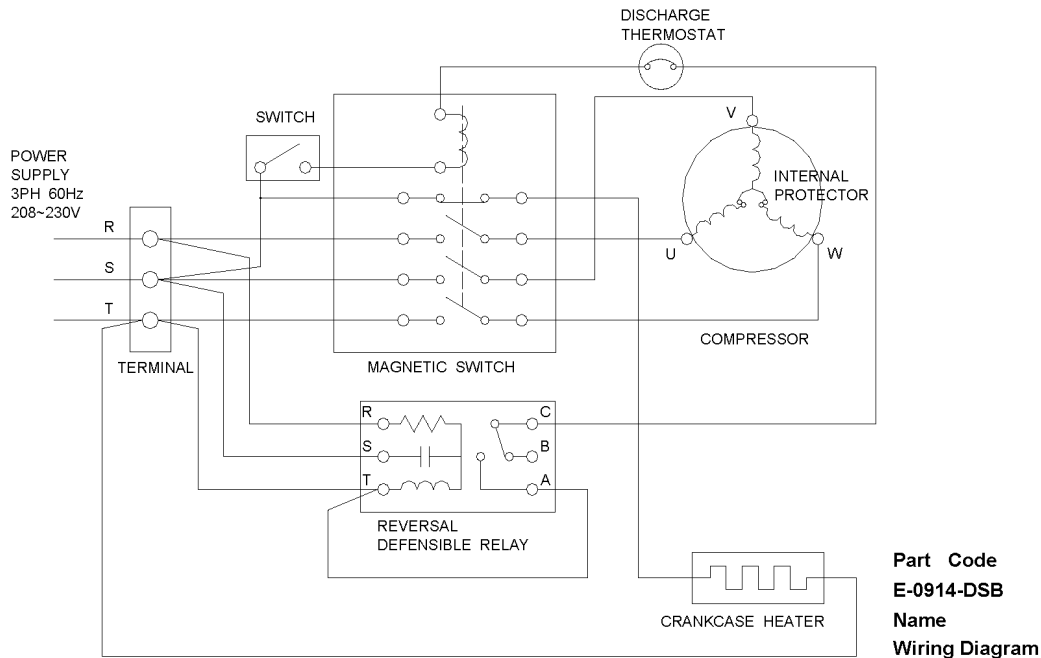
4. Rated Performance Parameters

| | |
|---------------------|--|
| Rated Capacity | W 18,100 ±5%, BTU/hr 61,757 reference |
| Rated Input Power | W 5,450, W 5,550, ±5% |
| Rated Input Current | A 17.30, A 17.50, ±5% |
| NOISE | dB(A) 65 MAX |
| VIBRATION | overall level below 60 μm, peripheral areas below 70 μm |

Rating Condition

| | |
|----------------------------|-------------------|
| Power Source | 60Hz-208/230V |
| Cond. Temp. | 54.4°C / 130°F |
| Evap. Temp. | 7.2°C / 45°F |
| Return / Suction Gas Temp. | 18.3°C / 65°F |
| Liquid Temp. | 46.1°C / 115°F |
| Ambient Temp. | 35°C / 95°F |
| Discharge Tube Temp. | 130°C / 266°F Max |

5. Wiring Diagram



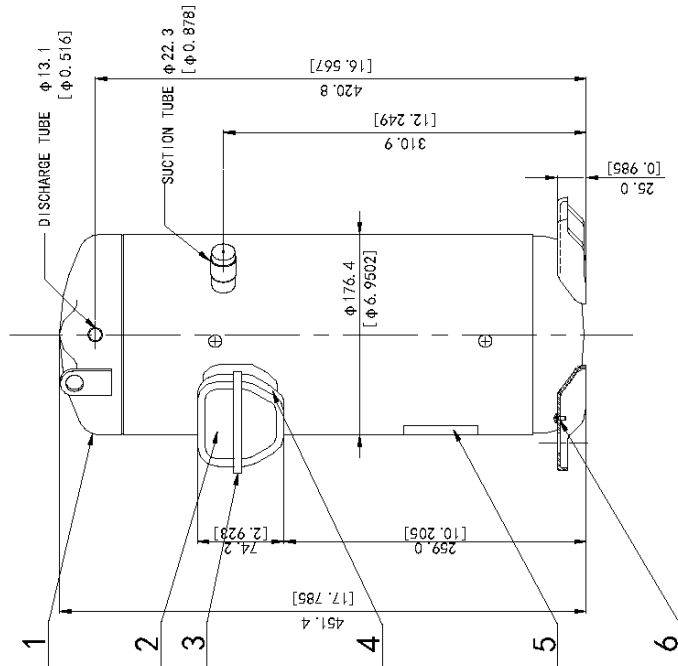
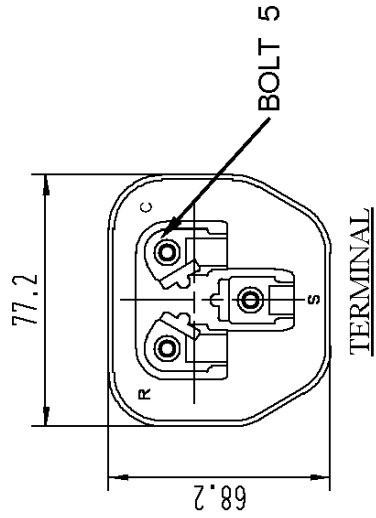
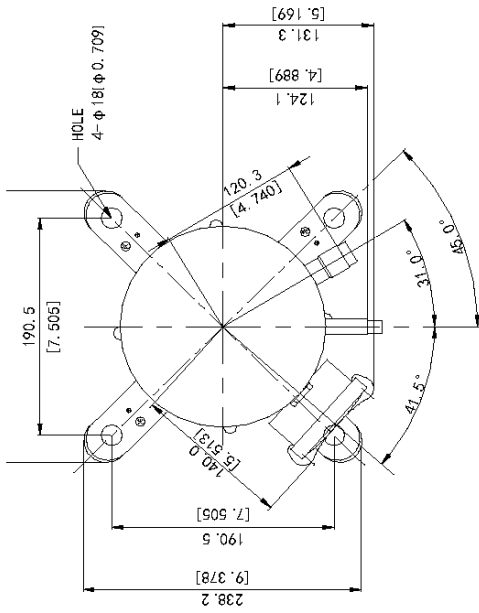
6. Other Application Notice

1. When designing the connection tube, the installer should consider the vibration stress at the compressor's start and stop to ensure it doesn't get damaged.
2. Do not put a compressor on its side or turn it over. It must always remain standing upright.
3. Please install the compressor right after removing the plugs.
4. When the amount of refrigerant charged in the air conditioner is over the max amount allowable, compressor specification should be discussed. (Install additional accumulator, oil heater, etc.)
5. Refrigerant must always be filled from the high side of the refrigeration system.
6. Avoiding compressor running in reverse by connecting electrical wires correctly.
7. Do not allow electric cables or the like to touch compressor directly.
8. To avoid water droplets and dust into the compressor, moisture-proof or dust-proof measures must be taken.
9. For split type air conditioners, the maximum piping length should be 49.21 feet, and elevation difference should be within 16.4 feet.
10. Wear safety goggles when servicing the unit.

Panasonic Scroll Compressor

Part No: SB373H6A

| No. | Part Code | Qty | Name |
|-----|------------|-----|----------------------|
| 1 | 809 850 86 | 1 | Compressor |
| 2 | A-0101-DSB | 1 | Terminal Box Cover |
| 3 | A-0201-DSB | 1 | Terminal Box Clip |
| 4 | A-0301-DSB | 1 | Eyelet Rub Lead Wire |
| 5 | | 1 | Nameplate |
| 6 | B-0101-DSB | 1 | Screw Special |



Part Code
D-0109-DSB
 Name
Compressor Outline Drawing